

What happens at a Ryegate assessment appointment?



I am going for a Ryegate assessment appointment. This might be at Ryegate Children's Centre. It might be at Centenary House. My parents or carers will know where the appointment is. My parents or carers will come with me.



Ryegate Children's Centre



Centenary House

When we arrive for the assessment, we will go in the entrance, which may look like this:

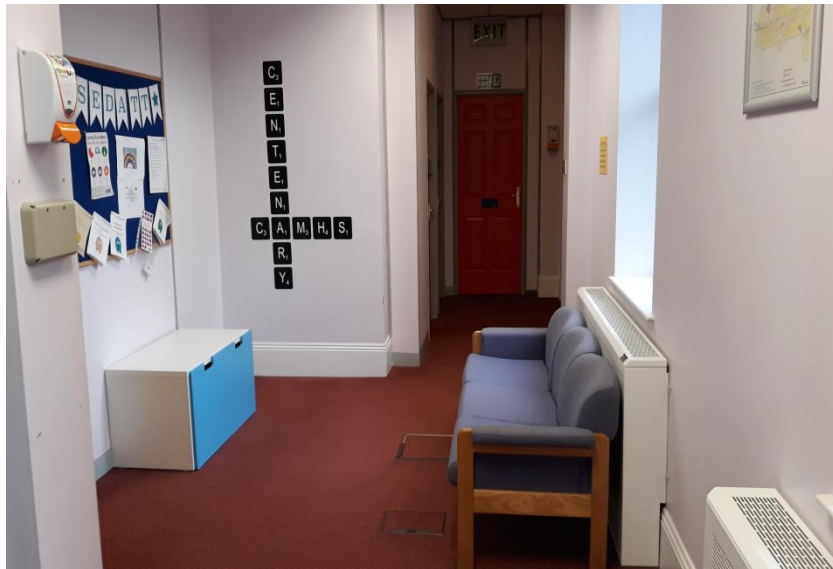


or



We will then go to reception. My parent or carer will let the receptionist know I am here.

After we go to reception, I might have to wait in a waiting room with my parent or carer. The waiting room might look like this:



Or



It might look a different way too. We might have to wait outside or in the car. I could be waiting for a short time or a longer time.

When it is time for my appointment to start, I will go into a clinic room with my parent or carer. The room might look like this:



or



It might look a different way too.

In the clinic room, I will meet the people who are going to do the assessment. I will meet a speech and language therapist. I might meet a doctor. I might meet a psychologist.



The psychologist or the doctor will ask my parent or carer some questions about when I was really little and what I am like now.

I will do some activities with the speech and language therapist. We may read a story and look at some pictures. There will also be some toys to play with. Some of these activities I might find fun and some might be more difficult.



When we have finished all the activities and my parent or carer has finished talking, we might have a short break. I will go back into the waiting room with my parent or carer. This will only be for a short time.



After the break we will all go back into the clinic room. The adults will talk about the assessment and what happens next. If I am OK with it, they might talk to me as well.



Then the appointment is finished. After the appointment, I might go home or I might go to school. My parent or carer will know where we are going after the appointment.



I might have to come back on a different day to do some more activities. Sometimes this happens with assessments. The adults will tell me if I need to come back.

I am going for an assessment with my parent or carer. I might meet some new people at the appointment. My parent or carer will answer questions and I will do some activities with a speech and language therapist. The assessment will help find out what I am good at and what I may find difficult.

