



**97.49%** of the **56,956** patients in our Emergency Department (ED) were seen within four hours

**No.1 in England**

**21,366**

↑ 6%

Community Mental Health appointments



**194,927**

Outpatient attendances

↑ 4.1%

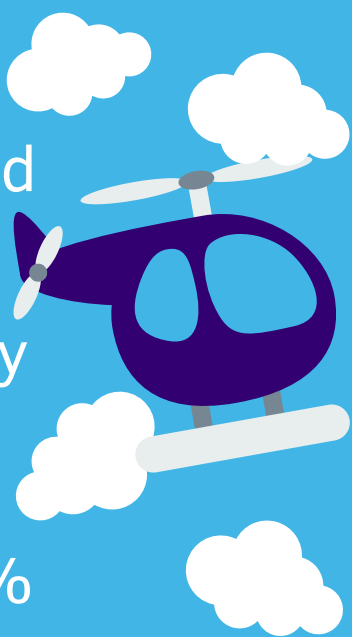
**2** New world class scanners



**2141**

Critical road and air transfers by Embrace

↑ 7.2%



Patients travelled from **Ethiopia, Holland** and **Egypt** for treatment at Sheffield Children's

**24,690** Inpatients were admitted on to one of our wards



**72** Beds for parents on our three new wards



**54** New en-suite bathrooms



**3591** Staff helping families

**1347** Overnight stays for patients at Ryegate House

**18,665** Pupils surveyed as part of Healthy Minds in schools around Sheffield



**196** Volunteers



Research studies at Sheffield Children's

↑ 7.6%



**115,001**

Appointments with our 0-19 community team

