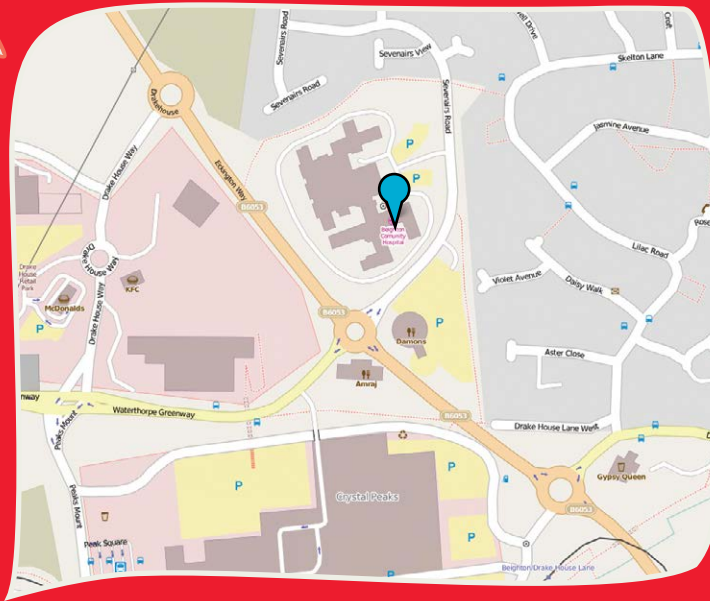




## HOW DO WE GET TO RUBY LODGE?



We are based at the Becton Centre for Children and Young People which is very close to Crystal Peaks shopping centre. There is limited parking available in the Becton Centre car park, and some on-street parking available nearby.



### BUS ROUTES

28, 27, 27a, 30, 30a, 42, 44, 55, 120, 121, 122, 123, 252, 253, 271, X52



### TRAMS

Beighton/Drakehouse Lane stop on the Blue line.

For more information on any of these questions, please visit our website:

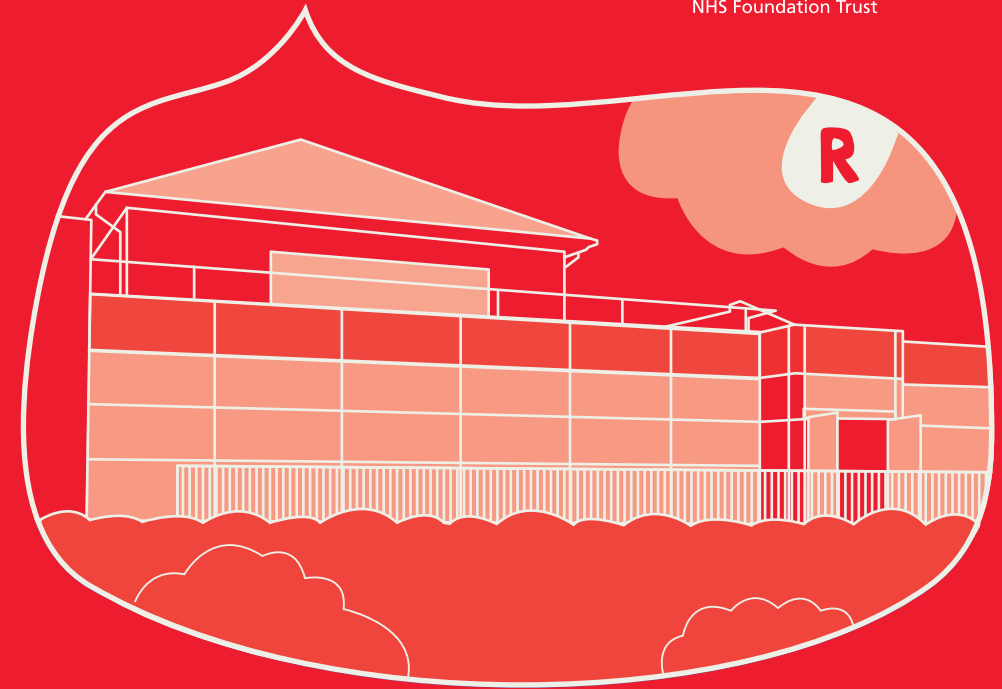
[www.sheffieldchildrens.nhs.uk/our-services/camhs](http://www.sheffieldchildrens.nhs.uk/our-services/camhs)

The Becton Centre for Children and Young People  
Sevenaers Road  
Sheffield S20 1NZ

Telephone: 0114 305 3106

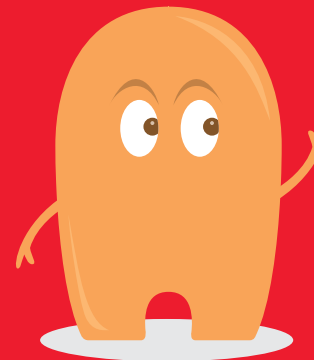


[www.epicfriends.co.uk](http://www.epicfriends.co.uk)



# RUBY LODGE CAMHS

Child and Adolescent  
Mental Health services





# WHAT IS RUBY LODGE?

Ruby lodge is a specialised unit designed to assess 8 to 17 year olds who have a diagnosis of a moderate to severe learning disability with an additional mental health condition. The lodge offers an intensive period of assessment delivered by a team of professionals.

Ruby Lodge has places for 7 young people.

## WHO COULD YOU MEET IF YOU COME HERE?



## WHEN ARE VISITING TIMES?

WHO?	DAY/ TIME ?	Visiting times can be adjusted for patients out of area
Parents/Carers/ Friends and other family members	Mon to Thu - after 3pm Fri - after 12.30pm Weekend - all day	

## HOW LONG WILL I BE HERE?

You will stay with us for a period of 12 weeks.

## MY MINI TEAM



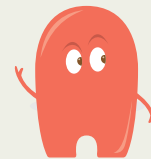
Whilst you stay with us you will have a designated group of people usually; a doctor, therapist, named nurse, associate nurse and a teacher who will monitor and manage your day-to-day care. The team will be in contact with your parents / guardians regularly to discuss your progress. If they need support when you visit home or at any time during your admission, the nurses are available by phone.



# THE ADMISSION PROCESS AND WHAT HAPPENS NEXT

- **Pre admission assessment** You will be visited at home by members of the team. This is an opportunity to meet, share information and ask questions which you need to be answered. This information will be taken back to the team where we will decide if an admission at Ruby Lodge is right for you. You will be informed within a week and invited to visit if an admission is appropriate.
- **Day of admission** – Staff will help you settle in to the ward while your parents meet with the doctor and nurses and share information.
- **During your assessment** –The assessment period will include a range of assessments, approaches and interventions by different professionals based on your individual needs.
- **Assessment/discharge reviews** – Everyone involved in your care will try and attend this meeting. A written report will be sent out before the meetings, this will include recommendations for your future care.

## WHAT WILL I DO WHILE I AM HERE?



- School sessions and trips
  - Small groups
  - Individual sessions
- Activities will be planned for school holidays

## WHAT DIFFICULTIES CAN WE HELP WITH?

