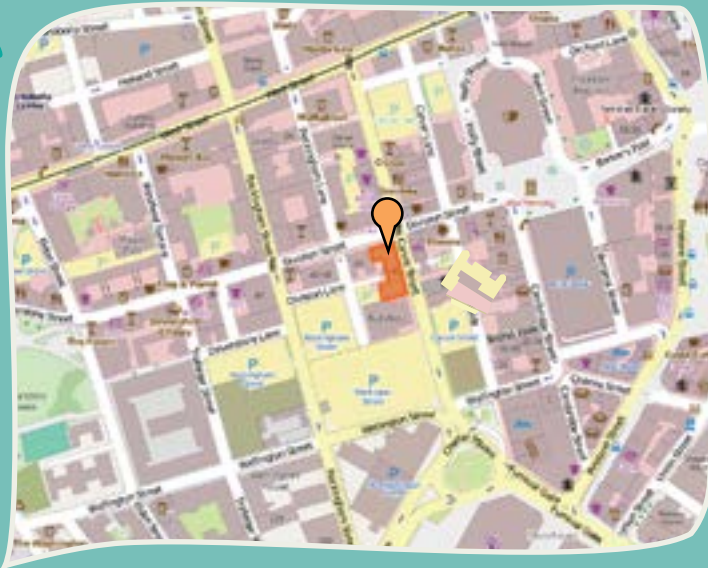




## HOW DO WE GET TO FORENSIC CAMHS?



We are based in Star House in the centre of Sheffield. There are pay and display car parks nearby and we are very close to public transport links. Ask at reception for Forensic CAMHS.



### BUS ROUTES

Any buses to city centre.



### TRAMS

The nearest tram stop is City Hall on the Blue or Yellow lines.

If you receive certain benefits you may be able to claim back your travel costs. Please ask when you come for your appointment.

For more information on any of these questions, please visit our website.

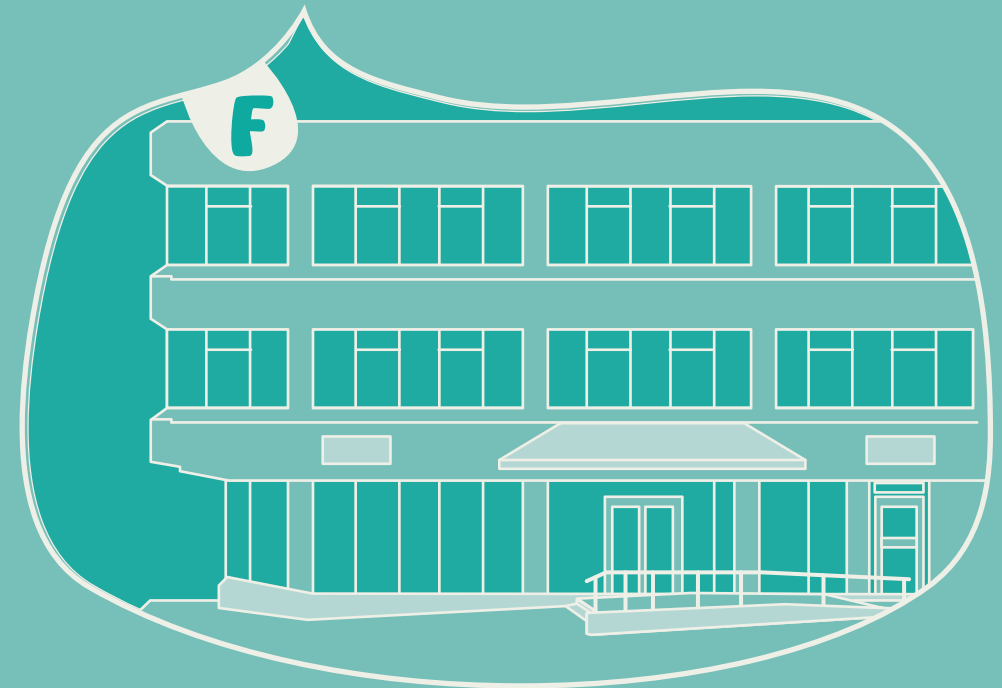
[www.sheffieldchildrens.nhs.uk/our-services/camhs](http://www.sheffieldchildrens.nhs.uk/our-services/camhs)

Forensic CAMHS  
Star House  
43 Division Street  
Sheffield S1 4GE

Telephone: 0114 226 0660  
Email: [forensiccamhs@sch.nhs.uk](mailto:forensiccamhs@sch.nhs.uk)

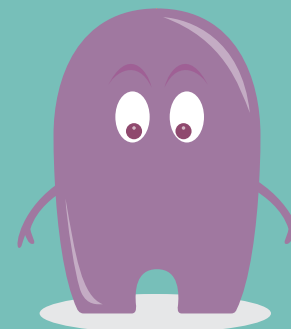


[www.epicfriends.co.uk](http://www.epicfriends.co.uk)



# FORENSIC CAMHS

Child and Adolescent  
Mental Health services





## WHAT IS FORENSIC CAMHS?

CAMHS stands for Child and Adolescent Mental Health Service. Coming to CAMHS doesn't mean you're "mental"! We work with young people who have difficulties with their emotions, thoughts or behaviour. The "forensic" part means we work with young people at risk of offending, or who are known to the Youth Justice System.

## WHAT CAN WE HELP WITH?

Many of the young people we work with have risky or concerning behaviours that might get them into trouble and we try and support them in reducing these. Young people might also have some of these difficulties:

- Anxiety (worries) and fears
- ADHD and concentration problems
- Autism Spectrum Disorders
- Self-Harm
- Difficulty managing emotions such as anger or sadness
- Substance misuse
- Difficulties with eating and body image
- Difficulties in relationships

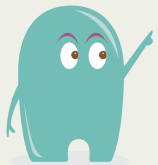
## WHAT WILL HAPPEN WHEN YOU COME TO FORENSIC CAMHS?



Before we meet you we'll talk to the person who's referred you. This might be your Youth Justice Worker/Officer or Social Worker.

We meet with you to talk about your difficulties. You can bring your family or Youth Justice worker with you if you want.

We'll work with you to decide the best way to help you and make a plan together.



## KNOW YOUR RIGHTS



- We can arrange for an interpreter if you or your family need one
- Let us know if you want or need information in a certain way and we will try to do this
- We will discuss with you who we share information with

If you have any complaints or feedback please let us know so we can do our best to put things right:

- You can write to: Chief Executive, Sheffield Children's NHS Foundation Trust, Western Bank, Sheffield, S10 2TH.
- Or you can speak to our Patient Advice and Liaison Service on 0114 271 7594.

## CONFIDENTIALITY MYTHS AND FACTS

### MYTHS

I don't have a choice about seeing CAMHS – I have to go.

My parents will find out everything I tell you.

You'll make me talk about everything bad that's ever happened to me.

If I tell you something bad you'll tell other services.

### FACTS

Coming to CAMHS is **voluntary**. You can **choose** if you want to come or not.

We **don't** have to tell your parents everything. You can talk to us **on your own** and we can discuss what you're happy to share with them.

We **might** talk about some of the things that have happened in the past but the focus of our work is on the **here and now**.

We only share things you tell us with people outside of this service if we're **really worried** about your safety or the safety of someone else. We will always try and **talk to you first** if this happens.

## WHO WORKS IN OUR TEAM?

CONSULTANT CHILD AND ADOLESCENT PSYCHIATRIST

CONSULTANT CLINICAL PSYCHOLOGIST

ADMIN/ SECRETARY

## WE ALSO WORK WITH...

YOUTH JUSTICE SERVICE CAMHS NURSE

SPECIALIST HEALTH NURSE

SPEECH & LANGUAGE THERAPISTS

TRAINEE CLINICAL PSYCHOLOGISTS

