



Sustainable Travel Plan

2022 - 2025



Introduction

In 2020, NHS England published 'Delivering a 'Net Zero' National Health Service' which set out the following targets:

- for the emissions we control directly, to reach net zero by 2040
- for the emissions we can influence, to reach net zero by 2045

At Sheffield Children's NHS Foundation Trust, travel and logistics related carbon emissions accounts for 13% of our total carbon footprint:

- **Colleague commute to work** = 7% of total carbon footprint
- **Colleague work related travel** = 1% of total carbon footprint
- **Patient, family/carer and visitor travel to our sites** = 5% of total carbon footprint
- **Our fleet travel** = <0.1% of total carbon footprint
- **Supply chain and logistics travel** = no current calculation, we are working on this.

In addition to the need to achieve Carbon Net Zero, we know that sustainable travel can help improve the physical and mental wellbeing of our people. We have referred to this as **Travel Smart** in our internal communications with colleagues including an intranet hub covering all of this information, as well as accessible information on our website for patients, families and carers.

John Armstrong, Chief Executive of The Children's Hospital Charity said: "We are delighted to support Sheffield Children's with this important initiative. We are also making a pledge to reach carbon net zero by 2045 and see sustainable travel as an essential part of this. For example, our next pool car at the charity will be an electric car and we will be making less business trips when we can hold video calls instead."

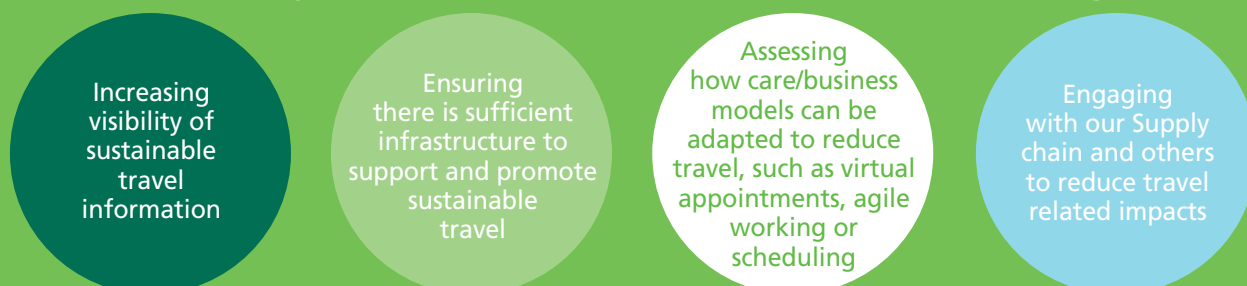
John Williams, Executive Director for Finance is the lead on our Green Plan and agenda. He said: "I am very proud to be leading the charge on sustainable travel at Sheffield Children's. The link between air pollution and health for future generations is a key driver for our work in this area, and this must be addressed in order for us to achieve our vision as a Trust

"to create a healthier future for children and young people."

And our core aims:

Provide outstanding patient care | Be a brilliant place to work | Become a leader in children's health

Here are four key areas that Sheffield Children's is championing:



To help reduce our travel related carbon footprint, we are asking colleagues, patients, families and visitors and our supply chain to engage with and explore any sustainable travel options.

We are aiming to reduce the carbon footprint from travel by 50% and 1,250 tCO₂e by 2030

Drivers for the plan

Carbon Net Zero / Sheffield Children's Green Plan

- Sheffield Children's current net zero aims align with NHS England's, for these to be achieved emissions from transport needs to be addressed

Health impacts

- **Air pollution** - In Sheffield, poor air quality has recently been estimated to account for up to 500 premature deaths per year, with health costs of around £160 million per year. Children are especially vulnerable to the effects of air pollution
- **Inactive lifestyle** - In addition to reducing air pollution, active travel can help to improve the health and wellbeing of employees and visitors to the Trust. Investment in walking and cycling infrastructure or behaviour change programmes deliver low cost, high-value dividends for individual health

“ Air pollution is the single greatest environmental threat to public health. Many of the causes of air pollution are major contributors to climate change, which also impacts on the population's health. The effects of air pollution can start before birth and are shown to have a greater impact on babies, children and young people. These effects are particularly damaging because they can have a lifelong impact. - Royal College of Paediatrics and Child Health ”

NHS Long Term Plan

- Sets out the minimum requirement that all Trusts must have a policy to; **'Improve air quality: including by cutting business mileages and fleet air pollutant emissions by 20%'**

Expected Future Trends

- **Clean Air Zone** - Sheffield City Council has introduced a clean air zone to Sheffield City Centre, the scheme currently does not include private vehicles but may do in the future
- **Electric Car Ownership**
- Electric vehicles and the supporting infrastructure are predicted to grow more rapidly within the timescale of this Travel Plan.
If growth continues in this way there may be an increased requirement for infrastructure including work-place and community charge points
- **UK Clean Air Strategy** - In 2019 the UK government announced their Clean Air Strategy which set out plans to end the sale of conventional petrol and diesel cars and vans by 2030



Aims and Achievements to date

The aims of this travel plan are to;

- **Increase visibility** of sustainable travel information
- **Improve our infrastructure** to support and promote sustainable travel
- **Assess and develop** sustainable care and business models to reduce the volume of business and patient travel
- **Engage** with our people, patients & visitors, supply chain, partners and other stakeholders
- **Monitor** and report on the environmental and health impacts from emissions and air quality from travel/transport to our sites to assess the effects and opportunities for improvements.

The achievements to date include;

- In 2021 the Trust **replaced its diesel fleet** vans with electric vehicles, called Theo's Green Machines. This has reduced carbon emissions by an estimated 2.8 tonnes of CO₂e per year, the vans charge overnight using surplus electricity generated by the on site Combined Heating Power Plant at our Western Bank hospital site
- 26,258 **virtual appointments** held in 2021/22. This resulted in almost 750,000 patient miles avoided and over 20 tonnes of CO₂e saved
- New **cycle facilities** have been provided
- **Dr Bike** sessions have been held on site which have increased the take up of cycling (based on follow up surveys)
- An **Electric pool bike** has been piloted at our Ryegate site for employees to use while visiting patients in the community
- Colleague **commuting and business** miles and costs have been temporarily reduced by the pandemic.
- Between 1 January 2021 and 31 January 2022, 54 **electric vehicles** were delivered for colleagues via our lease car scheme.

What our colleagues and visitors have told us

- Colleague travel survey shows nearly 50% do not travel to work by car
- Visitor survey show 76% of patients, families and carers travel by car, albeit nearly 100% to the Emergency Department travel by car.



Action Plan

OUR PEOPLE

P1

Improve accessibility of maps for public transport, walking, cycling routes & infrastructure

P2

Improve quality and quantity of changing facilities for colleagues arriving at work

P3

Provide sustainable travel information to all new starters as part of induction

P4

Communications to promote active travel, sustainable transport & car-sharing including the use of incentives/perks/offers

P5

To ensure sustainable travel is relevant to all colleagues, working with our existing people networks to iterate and develop our approach

P6

Continue to develop education and training for colleagues to better understand the importance of sustainable travel, working in partnership with the Health and Wellbeing Group

P7

Create a sustainable travel working group as part of the Green Network

P8

Support colleagues and promote access to Electric Vehicle lease cars

P9

Explore the benefits of a car club scheme for business travel and travel between sites

P10

Minimise overseas travel to essential criteria and support colleagues to identify sustainable travel options for longer journeys with 'no flights' within the Isle of Great Britain

P11

Explore making cycle mileage expenses rates (20p/mile) equal or greater than driving rates (56p/mile*)

P12

Develop an approach for safer cycle training for colleagues to access

P13

Implement a bike trial/loan service for colleagues to 'try before you buy'

P14

Trial e-bike pool for employees to use with the vision they replace some community car journeys

P15

Have frequent Dr Bike sessions across all sites

P16

Ensure adequate cycle storage facilities are available to all colleagues and visitors

P17

Explore providing small grants or loan bikes to colleagues to help purchase cycling equipment

P18

Develop partnerships with local voluntary and charitable sector.

OUR VISITORS & PATIENTS

V1

Electric Vehicle Charging Point plan to be developed across all Sheffield Children's owned sites

V2

Improve access to bus times and routes with Sheffield Children's sites

V3

Taxis booked by Sheffield Children's to have zero tailpipe emission

V4

Install signs in turning circle and Emergency Department asking vehicles (including ambulances) to not idle while waiting

V5

Ensure there is sufficient cycle storage facilities at all sites for visitors and it is clearly signposted

V6

Develop our thinking to holistic approach to care considering appointment frequency and site access

V7

Explore how sustainable travel can help improve health inequalities

V8

Monitor and promote virtual appointments, where clinically appropriate

V9

Develop initiatives to provide free or discounted public transport travel for patients and visitors – with a particular focus on health inequalities

V10

Develop relationships with South Yorkshire Passenger Travel Executive and Sheffield City Council to develop mutually beneficial plans such as how to reduce car travel, improve safety and increase sustainable travel options

V11

Explore sustainable travel options for blue badge holders.

V12

Investigate options to improve local road safety, specifically a safe crossing outside the Outpatients HUB at the Western Bank hospital site

OUR SUPPLY CHAIN & OTHER

S1

Develop a procurement approach to a more sustainable supply chain

S2

Develop refreshed tender scoring matrix to incorporate social values as a core component

S3

Explore sustainable patient transport options for our Embrace Service with Yorkshire Ambulance and be open to providing necessary infrastructure – such as e-ambulances and charging infrastructure

S4

Work in partnership with The Children's Hospital Charity on development and delivery of this plan to increase impact

S5

Work in partnership with NHS England and the ICS to develop a region wide approach to sustainable travel, looking at how as an Integrated Care System (ICS) we can work together to reduce patient travel and create region wide travel programmes

Targets & how to achieve success will be measured

Objective	Baseline	Target	Measure	Timescale
Number of virtual appointments to be recorded (Outpatients Department)	n/a	25% of appointments	Trust data	Annual
Increase SDAT scoring year on year	19%	Increase	SDAT scoring	Annual
Increase clean air hospital framework year on year	24 (8%)	Increase	Clean Air assessment	Annual
Number of on-site secure cycle parking bays	104	200	Count of bays	2022
Increase cycle to work scheme take up year on year	45 people	100 / year	Vivup Data	2023
Reduce single person car travel	52.62%	30%	Travel Survey results	2025
Increase cycling rates	6.46%	15%	Travel Survey results	2025
Increase lift sharing	4.62%	10%	Travel Survey results	2025
Increase public transport use	20%	30%	Travel Survey results	2025
Reduce business mileage	859,361 miles	20% reduction	Monitor via payroll	2025
Reduce visitor travel by car	76% (2015)	50%	Visitor travel survey	2025
Reduce air pollution (NOx) associated with travel	5.7 Tonnes NOx 0.3 Tonnes PM 2.5	3.7 Tonnes (NOx) 0.2 Tonnes (PM 2.5)	HOTT Tool	2025
Reduce life years lost due to pollution	0.8 years	0.4 years	HOTT Tool	2025
Travel Survey completed by colleagues	329 (10%)	20%	Survey	2025
Reduce carbon footprint associated with travel	2,508 tCO ₂ e	50% reduction	Carbon Footprint	2030



Sheffield Children's **NHS**
NHS Foundation Trust

This document is meant to be viewed electronically. Help us to achieve our green aims and try not to print it!