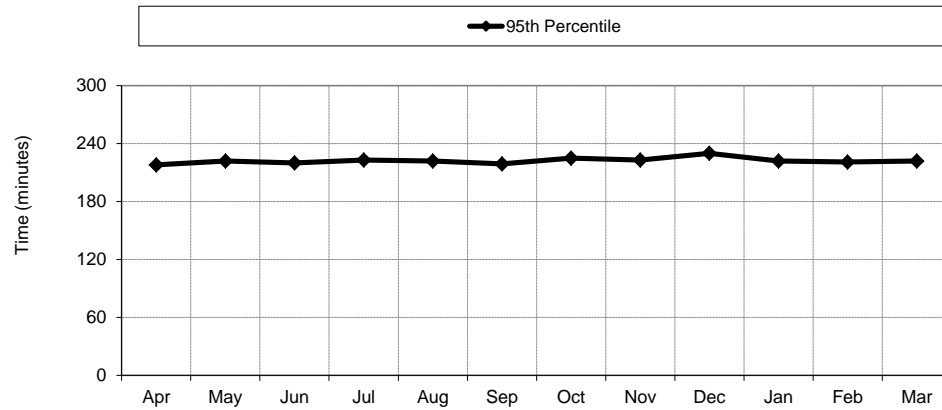


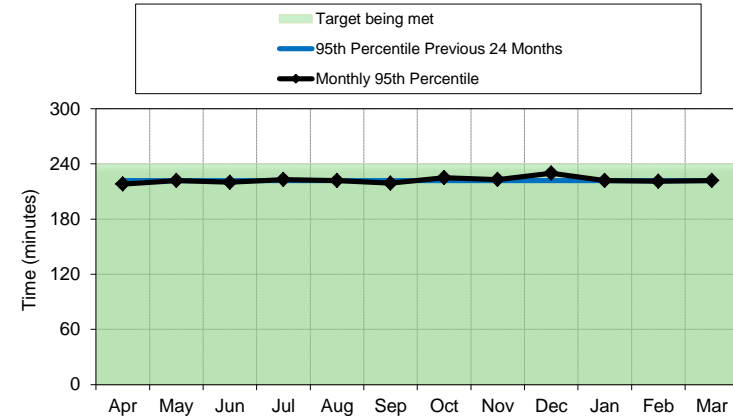
Sheffield Children's NHS Foundation Trust - A&E Quality Indicators 2011/12

**Total time in the A&E department**

Site-level performance



Site performance against performance thresholds



Description of Data

The Total Time in the A&E Department indicator looks at all attendances to the Emergency Department and measures the time between when the patient first arrived and the time the patient was either admitted, transferred or discharged, i.e. the total time spent in the A&E department.

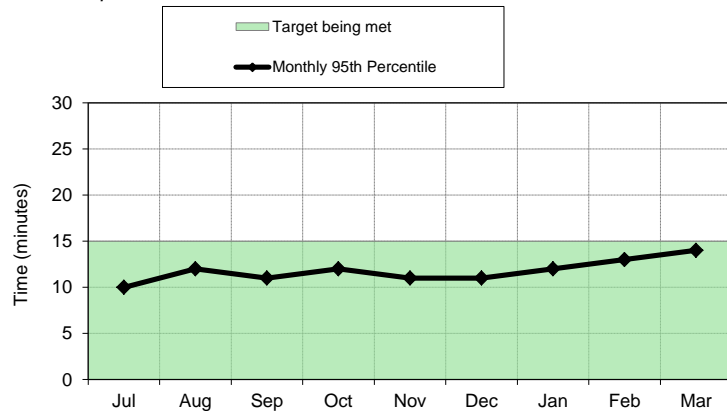
The target for the Total Time in the A&E Department is that 95% of attendances to the Emergency Department should spend 240 minutes (4 hours) or less in the department in total.

The Emergency Department has continued to meet this target throughout the year.

222 95th percentile this month

**Time to Initial Assessment**

Site-level performance



Description of Data

The Time to Initial Assessment indicator looks at all patients who arrived by Emergency Ambulance and measures the time between when the patient first arrived in the Emergency Department and the time they received their initial assessment.

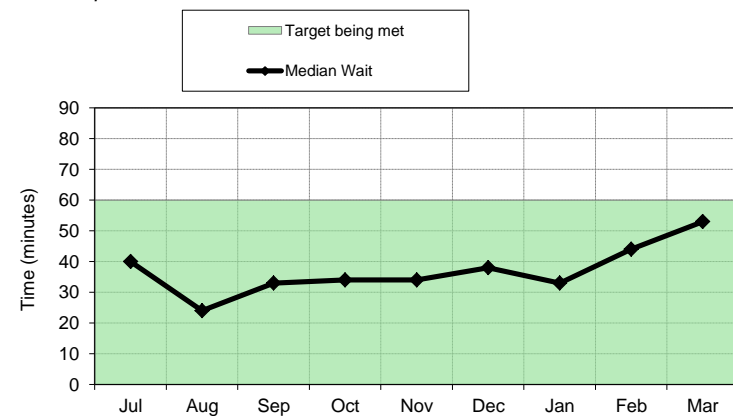
The target for Time to Initial Assessment is that 95% of patients who arrive by Emergency Ambulance should receive their initial assessment within 15 minutes of arrival.

Patients arriving by ambulance have been seen within 15 minutes throughout the year. In March we took a little bit longer to see these patients, which reflects the increasing number of patients we saw in the month. In children, arriving by ambulance doesn't always reflect how unwell the child is and many poorly children arrive by car. For this reason the department balances the need to meet this target with the need to see children who require urgent care, however they have arrived at the hospital.

14 95th percentile this month

**Time to Treatment**

Site-level performance



Description of Data

The Time to Treatment indicator looks at all attendances to the Emergency Department and measures the time between when the patient first arrived and the time they were seen by a clinician who can diagnose the problem and arrange or start treatment, known as the decision-making clinician.

The target for Time to Treatment is that 50% of attendances to the Emergency Department should see the decision-making clinician within 60 minutes of arrival.

All children have been seen by a suitable clinician within 60 minutes of their arrival at the hospital during the year. Our performance deteriorated in March as we had many more patients to see.

53 Median Wait this month

Unplanned re-attendance		Left without being seen																																									
<p><b>Site-level performance</b></p> <table border="1"> <caption>Unplanned Re-attendance Rate Data</caption> <thead> <tr><th>Month</th><th>Re-attendance Rate (%)</th></tr> </thead> <tbody> <tr><td>Jul</td><td>6.2</td></tr> <tr><td>Aug</td><td>6.2</td></tr> <tr><td>Sep</td><td>6.8</td></tr> <tr><td>Oct</td><td>7.2</td></tr> <tr><td>Nov</td><td>8.5</td></tr> <tr><td>Dec</td><td>9.2</td></tr> <tr><td>Jan</td><td>9.0</td></tr> <tr><td>Feb</td><td>8.8</td></tr> <tr><td>Mar</td><td>7.9</td></tr> </tbody> </table>	Month	Re-attendance Rate (%)	Jul	6.2	Aug	6.2	Sep	6.8	Oct	7.2	Nov	8.5	Dec	9.2	Jan	9.0	Feb	8.8	Mar	7.9	<p><b>Description of Data</b></p> <p>The Unplanned Re-attendance Rate indicator looks at unplanned follow-up attendances to the Emergency Department within 7 days of the patient's original attendance.</p> <p>The target for the Unplanned Re-attendance Rate is that less than 5% of patients should re-attend an unplanned follow-up within 7 days.</p>	<p><b>Site-level performance</b></p> <table border="1"> <caption>Left without being seen Rate Data</caption> <thead> <tr><th>Month</th><th>Left without being seen rate (%)</th></tr> </thead> <tbody> <tr><td>Jul</td><td>1.2</td></tr> <tr><td>Aug</td><td>0.8</td></tr> <tr><td>Sep</td><td>1.0</td></tr> <tr><td>Oct</td><td>1.0</td></tr> <tr><td>Nov</td><td>0.8</td></tr> <tr><td>Dec</td><td>1.2</td></tr> <tr><td>Jan</td><td>0.8</td></tr> <tr><td>Feb</td><td>1.2</td></tr> <tr><td>Mar</td><td>1.8</td></tr> </tbody> </table>	Month	Left without being seen rate (%)	Jul	1.2	Aug	0.8	Sep	1.0	Oct	1.0	Nov	0.8	Dec	1.2	Jan	0.8	Feb	1.2	Mar	1.8	<p><b>Description of Data</b></p> <p>The Left Without Being Seen Rate indicator looks at patients who left the Emergency Department before seeing a clinician who could diagnose the problem and arrange or start treatment (known as the decision-making clinician).</p> <p>The target for the Left Without Being Seen Rate is that less than 5% of patients should leave the department before seeing a decision-making clinician.</p>
Month	Re-attendance Rate (%)																																										
Jul	6.2																																										
Aug	6.2																																										
Sep	6.8																																										
Oct	7.2																																										
Nov	8.5																																										
Dec	9.2																																										
Jan	9.0																																										
Feb	8.8																																										
Mar	7.9																																										
Month	Left without being seen rate (%)																																										
Jul	1.2																																										
Aug	0.8																																										
Sep	1.0																																										
Oct	1.0																																										
Nov	0.8																																										
Dec	1.2																																										
Jan	0.8																																										
Feb	1.2																																										
Mar	1.8																																										
<p>Reattendance within 7 days is more common in children than in adults as children more often suffer different conditions within a shorter time span, for example having an accident and then later a chest infection. This indicator is not sufficiently sensitive to separate these issues out however the Department of Health require that all Truts be measured against this target. The Trust has revised the methodology in calculating performance so it is the same as the method used by the Department of Health and as a result, this target is showing as not being achieved. For children, we would always say if you remain worried about your child when you have gone home, or the situation changes do come back, or if appropriate make an appointment with your GP if this can be done in a timely way. In the winter months we expect the unplanned re-attendance rate to rise because of winter viruses. We are therefore not surprised that we have failed this target all year.</p>	<table border="1"> <tr> <td>7.9%</td> <td>Rate this month</td> </tr> </table>	7.9%	Rate this month	<p>The Trust continues to achieve this target and shows that not many patients who come to the hospital leave before being seen by a clinical member of staff. Sometimes, when hospital is busy the number of people who leave without being seen can increase. The Left without being seen rates are low in our trust as the department has low waiting times compared to most A&amp;E departments.</p>	<table border="1"> <tr> <td>1.8%</td> <td>Rate this month</td> </tr> </table>	1.8%	Rate this month																																				
7.9%	Rate this month																																										
1.8%	Rate this month																																										